

1 2 3 4 5 6 7 8 9

F

F

E

E

D

D

C

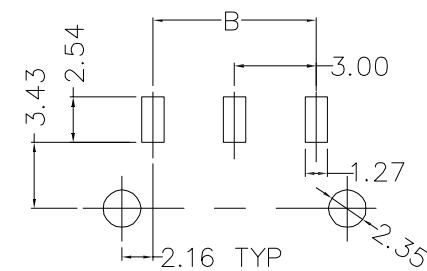
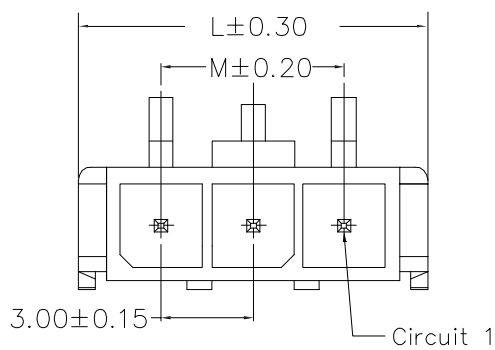
C

B

B

A

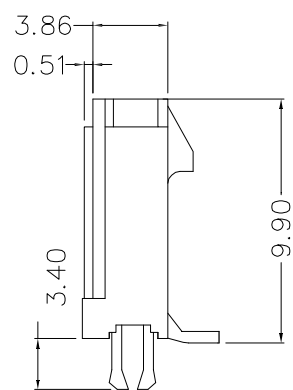
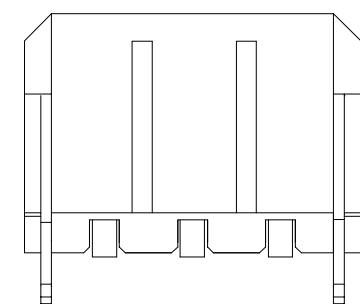
A



P.C.B. LAYOUT

Specifications

Voltage rating: 250V AC / DC
 Current rating: 5A AC / DC
 Withstanding voltage: 1000V AC/minute
 Temperature range: -25°C~+85°C
 Insulation resistance: ≥1000MΩ
 Contact resistance: ≤10mΩ
 After environmental testing: ≤20mΩ



No of Pins	Dimensions (mm)	
	L	M
02	9.65	3.00
03	12.65	6.00
04	15.65	9.00
05	18.65	12.00
06	21.65	15.00
07	24.65	18.00
08	27.65	21.00
09	30.65	24.00
10	33.65	27.00
11	36.65	30.00
12	39.65	33.00

Ordering Information

G WZC114-XX XX F 001 C X B X

No. of Pins per Row 02~12 Standard Plating 22=Matte Tin Selective Plating 01=Tin 02=Gold Flash Color 1=Black 2=White ... Standard Packing D=Tape&Reel

<p>Website: www.greenconn.com E-mail: sales@greenconn.com</p>	<p>3RD.ANG PROJ.</p>	GENERAL TOLERANCE		<p>DESIGNED:</p>	<p>DATE:</p>	<p>DWG. NO. GWZC114-CF001</p>	<p>TITLE. 3.0mm pitch Crimp Style Connector</p>		
		X'±3.0'	X.±/					<p>CHECKED:</p>	<p>DATE:</p>
		.X'±2.0'	.X±0.30						
		.XX'±1.5'	.XX±0.25						
.XXX'±1.0'	.XXX±0.15	<p>APPROVED:</p>	<p>DATE:</p>	<p>PART NO. GWZC114-XXXXF001CXBX</p>					
REV. A	UNIT. mm	SCALE. 1:1	PAGE. 1/1						

1 2 3 4 5 6 7 8 9